

# Getting started with continuous profiling

---

This article explains how to install and run the ANTS Performance Profiler 7 continuous profiling tool. It also includes instructions on uninstalling, troubleshooting problems, and viewing profiling results.

## About continuous profiling

ANTS Performance Profiler's new continuous profiling tool lets you collect performance data on ASP.NET applications as they run in IIS.

The tool uses a third-party IIS module to monitor the .NET call stacks in each IIS worker process (*w3wp.exe*). Profiling results are displayed in a web interface.

In future versions the tool will include an automatic installer, but during the early access program the tool must be installed manually.

The continuous profiling tool can be installed on computers running IIS 7 or 7.5.

## To install and set up continuous profiling:

1. Download the latest build from the [EAP download page](#) and install it on the computer where your site is hosted.

The installer also includes the desktop ANTS Performance Profiler application, though the desktop application is not used to view continuous profiling results. For information on working with ANTS Performance Profiler see [Getting started – ANTS Performance Profiler](#).

2. On the Start menu, right-click **Continuous Profiling Configuration Tool**, and choose **Run as administrator**.

The configuration tool:

- Registers the continuous profiling plugin modules as COM objects and in IIS;
- Creates a directory to which the profiler will write results logs;
- Sets up and deploys in IIS a website for viewing profiler results

Continuous profiling is now activated automatically for all sites running on your server. In later versions of continuous profiling you will be able to select which sites are profiled.

## To view profiling results:

1. Using Chrome, Firefox, or Internet Explorer 9, browse to <http://localhost/ANTSPProfiler> : the ANTS Performance Profiler web UI loads, showing profiling results for all sites running on the server (including the profiler web UI itself).

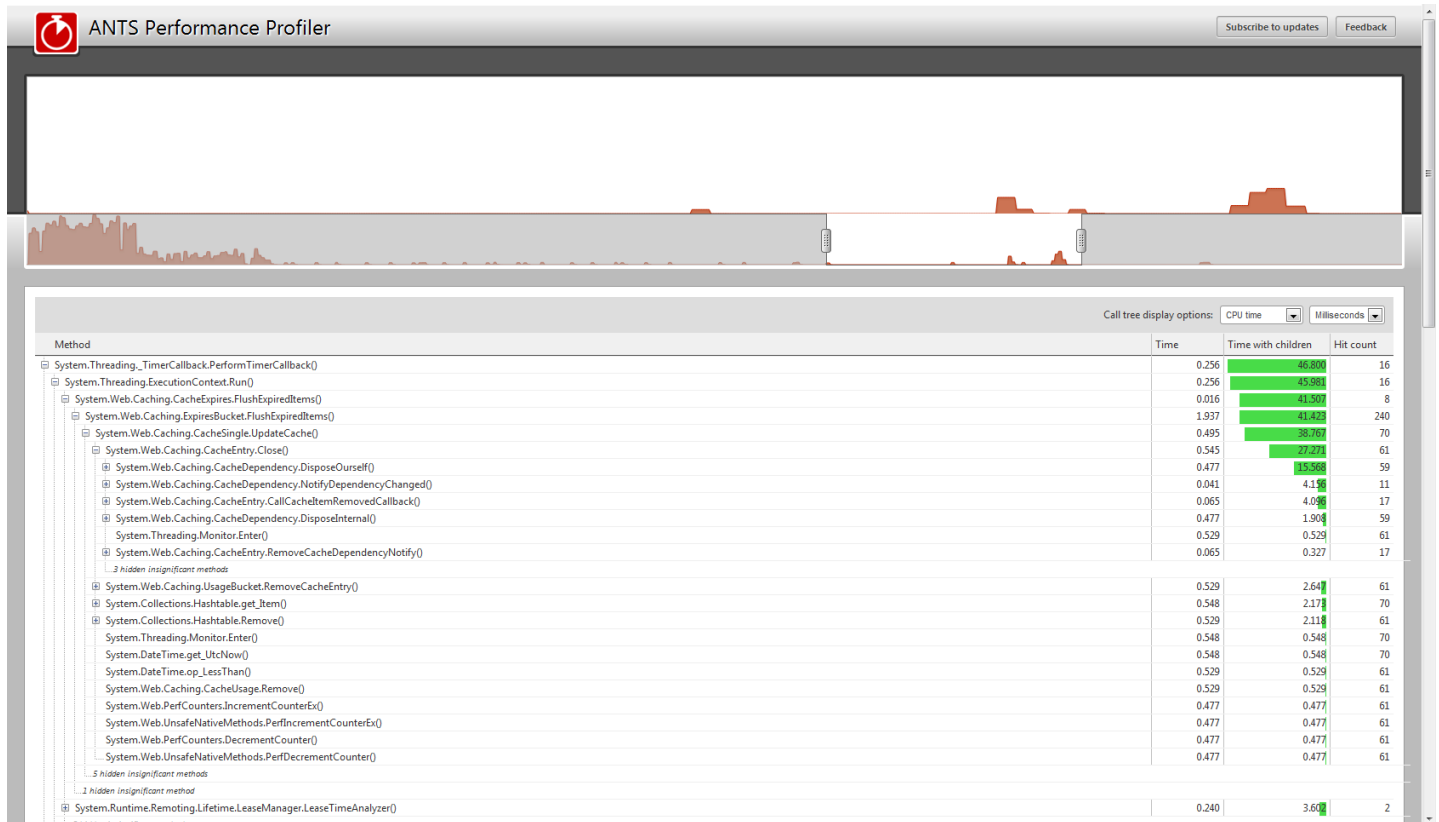
## Using the web UI

The UI shows two timelines: the lower timeline displays CPU usage for up to the last six hours. To view CPU usage for a shorter period in the upper timeline, select a region on the lower timeline.

When you select a region, a call tree appears below the timelines, showing all methods called during the selected interval. Use the **+** and **-** buttons to expand and collapse call stacks.

Timings for insignificant methods (which contribute less than 1% of the total execution time for the selected time period) are not shown.

For advice on interpreting results, see [Working with the call tree](#).



## Updating the continuous profiler

The continuous profiling tool is time-bombed to expire 16 days after it is built.

To continue using continuous profiling after expiry, you will need to download and install an unexpired build from [http://help.red-gate.com/help/ANTSPerformanceProfiler/download\\_eap.html](http://help.red-gate.com/help/ANTSPerformanceProfiler/download_eap.html).

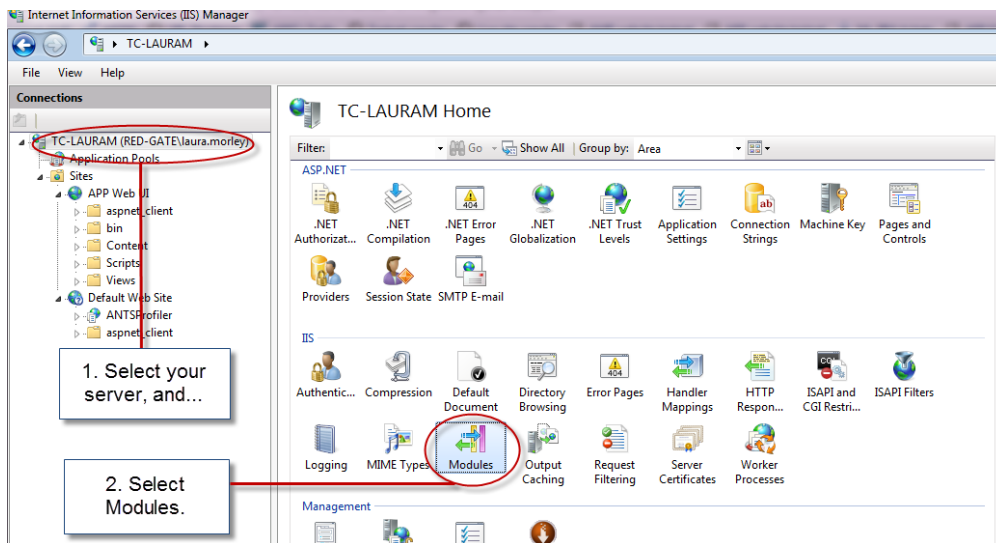
## Re-enabling desktop IIS profiling after a continuous profiling session

After using continuous profiling, if you run an IIS profiling session using the main ANTS Performance Profiler application, you will see no profiling results. This is because the continuous profiler IIS modules block the desktop profiler from attaching to IIS.

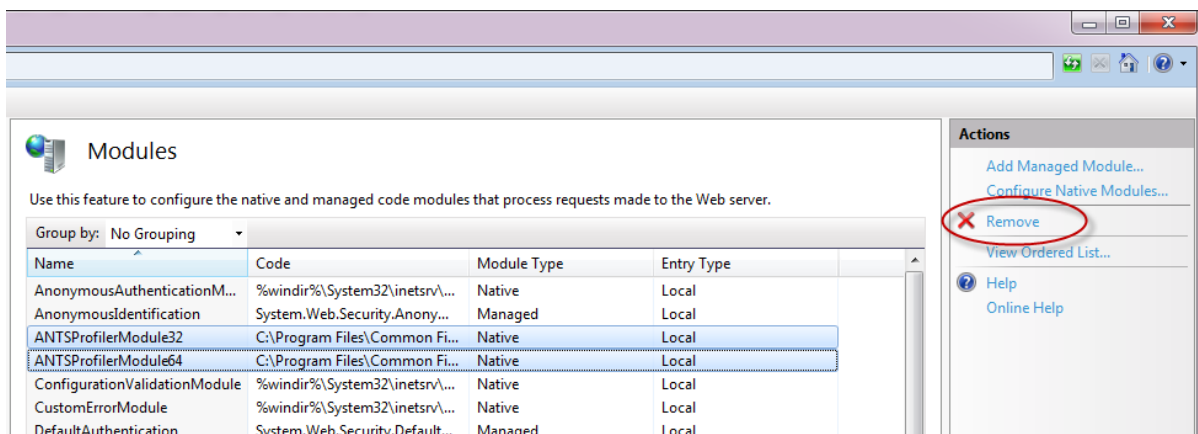
To re-enable profiling using the main ANTS Performance Profiler application, follow the instructions below to uninstall the continuous profiling tool.

## To uninstall the continuous profiling tool:

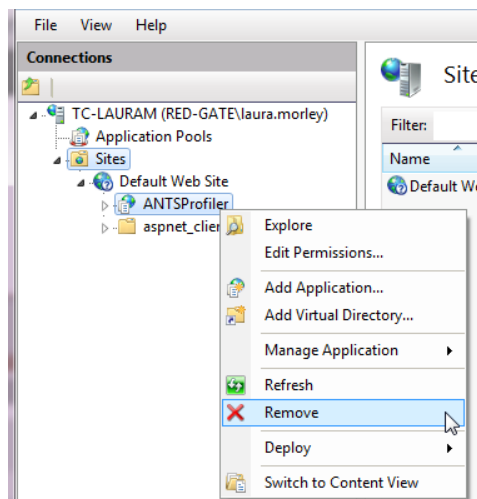
1. In IIS Manager, select your server, and double-click to select **Modules**.



2. From the **Modules** list, Select *ANTSPProfilerModule32* and *ANTSPProfilerModule64*, and, in the **Actions** pane, select **Remove**.



3. Select **Configure Native Modules**. Select *ANTSPProfilerModule32* and *ANTSPProfilerModule64*, and click **Remove**.
4. In the **Default Web Site** directory, right-click *ANTSPProfiler*, and select **Remove**.



5. Click **Yes** to confirm removal.

## Troubleshooting

### Missing results

If no results appear in the web UI:

- Ensure that the *IIS\_IUSRS* account has full control permissions to *C:\inetpub\ProfilerLogs*
- Check the Windows event log for error messages. If the message “Could not load profiler” is shown, ensure that the 32-bit and 64-bit modules are registered in *%ProgramFiles%\Red Gate\ANTS Performance Profiler 7\{GUID}\RedGate.Profiler.Continuous.x86.dll* and *%ProgramFiles%\Red Gate\ANTS Performance Profiler 7\{GUID}\RedGate.Profiler.Continuous.x64.dll* respectively.

For instructions on viewing the Windows event log, see:

- [Open Event Viewer - Windows 7 \(MSDN\)](#)
- [Open Event Viewer - Windows Vista \(MSDN\)](#)

### Reporting another problem

If the above steps don't solve your problem, please report it to us, including the following details:

- A description of the problem you're seeing
- A note of the build number of continuous profiling that you're using, e.g. *ANTS Performance Profiler\_7.0.0.730* - you can check this by finding the application you downloaded in the Downloads folder.

If you encounter problems with continuous profiling, we can debug them more easily if you set up and send us your logs. To set up logging:

1. In the directory containing the WebUI directory, create a new directory called **Logs**.

For example, if the path to the website files is *C:\Program Files\Red Gate\ANTS Performance Profiler 7\WebUI\*, the log directory should be created as *C:\Program Files\Red Gate\ANTS Performance Profiler 7\Logs*.

2. Assign full control permissions to the *IIS-IUSRS* account for the new Logs directory.

Logs will now be written to this new directory for each action during each profiling session, including actions where no error occurs.