

Installing Exchange Server Archiver

Exchange Server Archiver - 3.0

Installing Exchange Server Archiver

You are recommended to read the Exchange Server Archiver Technical Overview for a description of the architecture and an explanation of how Exchange Server Archiver archives messages.

Exchange Server Archiver provides wizards to guide you through the installation and setup. You are recommended to read this document before you proceed with the installation.

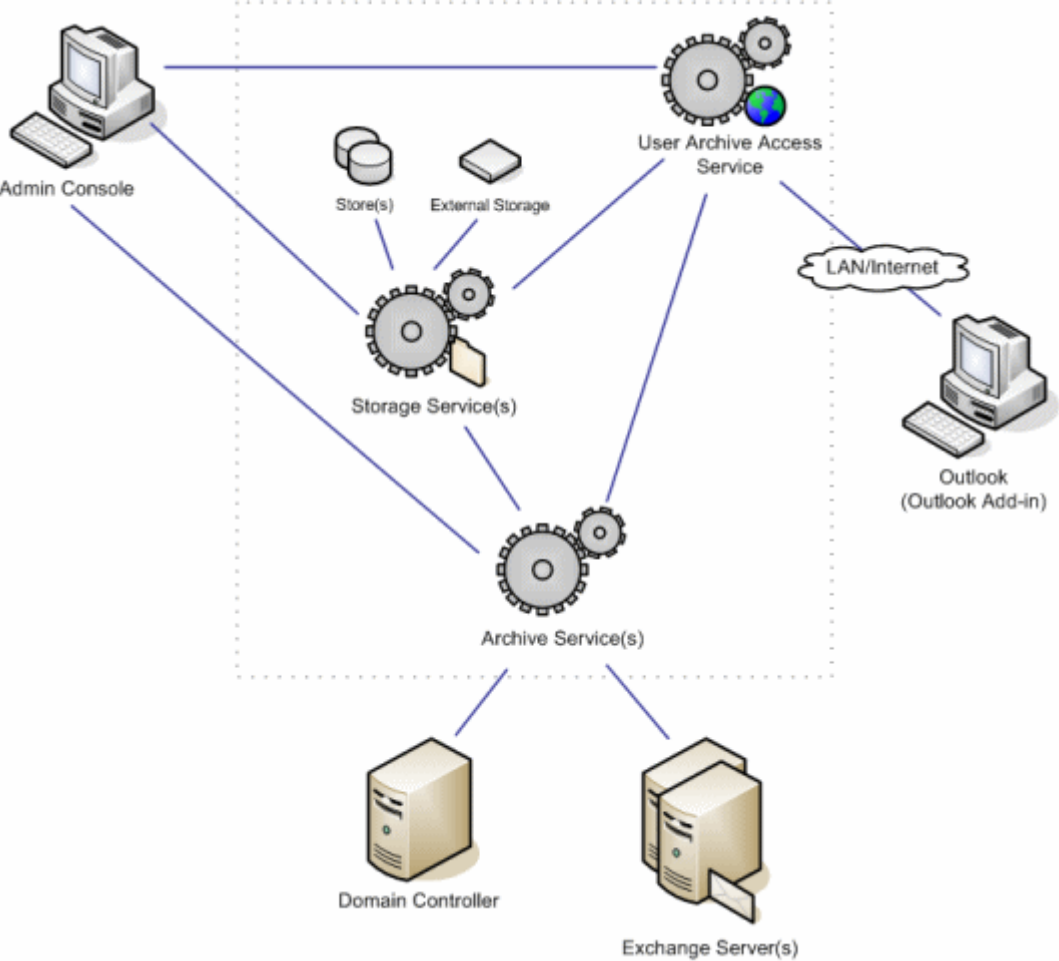
For details of how to install and configure a trial environment for Exchange Server Archiver, see *Setting up a trial environment* (http://www.red-gate.com/ESA/Trial_Setup/v3.0).

Contents

Architecture (page 3)
Prerequisites (page 4)
Creating the Archive Service user (page 7)
Installation overview (page 11)
Installing the Admin Console (page 12)
Installing the services and components (page 13)
Configuring IIS (page 21)
Uninstalling Exchange Server Archiver (page 23)

Architecture

The diagram below illustrates the components and services that you will install.



When you install Exchange Server Archiver, no software is installed on your Exchange server (unless you choose to install the optional Outlook® Web Access Add-in) and no information is stored in Active Directory®.

Prerequisites

To install Exchange Server Archiver, and to use the Admin Console, you must be a *domain administrator*. The Archive Service, User Archive Access (UAA) Service, and the Storage Service must all be installed in the same domain.

The following is required:

- Microsoft Exchange Server 2010 (Update Rollup 1 or later)
- or Microsoft Exchange Server 2007 with public folders enabled (Service Pack 1 and Update Rollup 3 or later (<http://support.microsoft.com/kb/937052>) for Outlook® Web Access Add-in)
- or Exchange Server 2003 (Service Pack 2 or later for Outlook Web Access Add-in)

For each of the computers on which you will install a service, the following is required:

- Windows XP, Windows 2003, Windows 2008, or Windows Vista®
- Microsoft .NET Framework 2.0 or later

Additionally, for the individual services, the following is required:

Archive Service

- MAPI (Messaging Application Programming Interface)
You must ensure that you install a version of MAPI that is compatible with your Exchange configuration. For details, see MAPI versions supported for Exchange Server Archiver (<http://www.red-gate.com/ESA/3.0?i=9464>).

The Archive Service needs a user to communicate with Exchange. You must create the user prior to installing the services and components; for full details of the necessary permissions and other requirements, see *Creating the Archive Service user* (<http://www.red-gate.com/ESA/3.0?i=9190>).

User Archive Access (UAA) Service

- IIS 5.1 or later
If you are using IIS 7, you must also set up IIS 6 Metabase Compatibility and Windows Authentication; see *Configuring IIS*.
Note: in a production environment, do not install the UAA Service on IIS 5.1 (or IIS 6.0 in IIS 5.0 isolation mode); only install the UAA Service on these versions in an evaluation environment in which all services are installed on the same server.
- ASP.NET 2.0
For IIS 7 and IIS 6, the UAA Service installer creates an application pool that is configured for ASP.NET 2.0. For IIS 5.1, you must ensure the ASP.NET version is set to 2.0; see *Configuring IIS*.

- MAPI

You must ensure that you install a version of MAPI that is compatible with your Exchange configuration. For details, see MAPI versions supported for Exchange Server Archiver (<http://www.red-gate.com/ESA/3.0?i=9464>).

- the installer requires that a Web site must be configured to use port 80 before you install the UAA Service; however, you do not have to use this Web site for the UAA Service

The server on which you install the UAA Service must be visible to users accessing their messages remotely.

The location of the UAA Service is added to archived messages. Therefore, **you are strongly recommended to create a CNAME (alias) DNS record for the UAA Service's server and enter this in the Web site address**; otherwise, a change to the URL will mean that all archived messages will need to be reprocessed.

Storage Service

- Microsoft® Indexing Service

For operating systems prior to Windows Vista and Windows Server® 2008, the Indexing Service is installed by default.

To install the Indexing Service on a Windows Vista computer, go to the Control Panel, and turn the Indexing Service feature on. You are also recommended to install the latest Windows Vista service pack; see the Microsoft support page article 940069 (<http://support.microsoft.com/kb/940069>). If you do not install this service pack, searches from the Outlook Add-in or UAA Service may return results from subfolders unexpectedly.

For information about how to install and configure the Indexing Service on a Windows Server 2008-based computer, see the Microsoft support page article 954822 (<http://support.microsoft.com/kb/954822>).

Outlook Web Access Add-in (optional)

- for Exchange Server 2007, Service Pack 1 and Update Rollup 3 or later (<http://support.microsoft.com/kb/937052>)
- for Exchange Server 2003, Service Pack 2 or later

Exchange Server 2010 Outlook Web Access is not supported.

Note that if you install further service packs or rollups after you have installed the Outlook Web Access (OWA) Add-in, you may need to uninstall and re-install the add-in.

If you are using Exchange Server 2003 and you install the UAA Service on a different computer from the Exchange server, to use the OWA Add-in you must allow delegation of credentials to the UAA Service. For full details, see Authorization for the OWA Add-in on Exchange Server 2003 (<http://www.red-gate.com/ESA/3.0?i=9453>).

Outlook Add-in (optional)

- Outlook 2007 (Service Pack 2 or later) or Outlook 2003
- Outlook .NET Programmability Support

Creating the Archive Service user

The Archive Service needs a mailbox-enabled user that has 'administer information store' permissions on all mailboxes when it communicates with Exchange. For Exchange Server 2003, the Archive Service user must also have 'view information store' permissions.

You are recommended to make the Archive Service user a domain administrator; domain administrators have the necessary permissions. If you do not wish to do this, you must:

1. Make the Archive Service user a local administrator on the Exchange servers, or add permissions to execute WMI calls on Exchange (page 7).
2. Add read permissions to the Exchange configuration subtree in Active Directory (page 8).
3. Make the Archive Service user a local administrator on the Archive Service computer.
4. Grant permissions on all mailbox databases (page 9).

Adding WMI permissions

If you do not want to make the Archive Service user a domain administrator or a local administrator on the Exchange servers, add permissions to execute WMI calls on Exchange:

1. Navigate to **WMI Control**.
To launch this from a command line, run `wmicmgmt.msc`
2. Right-click **WMI Control** and select **Properties**.
3. In WMI Control Properties, select the **Security** tab.
4. Under **Root**, expand **CIMV2**, and then click **Security**.
5. Click **Advanced**.
6. Click **Add**, type the name of the user, and click **OK**.
7. In Permission Entry for CIMV2, ensure *This namespace and subnamespaces* is selected in **Apply to**, and then select the **Allow** check box for:
 - ◆ **Execute Methods**
 - ◆ **Enable Account**
 - ◆ **Remote Enable**
8. Click **OK** three times to return to the **Security** tab.
9. For Exchange Server 2003 only:
 - a. Under **Root**, expand **MicrosoftExchangeV2**, and then click **Security**.
 - b. Click **Advanced**.
 - c. Click **Add**, type the name of the user, and click **OK**.

- d. In Permission Entry for MicrosoftExchangeV2, ensure *This namespace and subnamespaces* is selected in **Apply to**, and then select the **Allow** check box for:
 - ◆ **Execute Methods**
 - ◆ **Enable Account**
 - ◆ **Remote Enable**
10. Click **OK** on all the WMI Control Properties dialog boxes, and close the WMI Control.
11. In Administrative Tools, open **Component Services**.
12. Expand **Component Services**, expand **Computers**, right-click **My Computer**, and then click **Properties**.
13. Select the **COM Security** tab.
14. Under **Launch and Activation Permissions**, click **Edit Limits**.
15. Add the Archive Service user name.
16. If the Archive Service will run locally, select the Allow check box for **Local Launch** and **Local Activation**; if it will run remotely, select **Remote Launch** and **Remote Activation**.
17. Click **OK** on all the My Computer Properties dialog boxes.
18. For Exchange Server 2007 only: navigate to the folder on disk for each storage group, and grant the Archive Service user permissions to read the folder and its contents.
For example, for a new, default installation, the storage group is in:
C:\Program Files\Microsoft\Exchange Server\Mailbox\First Storage Group

Adding Exchange configuration subtree permissions

If you do not want to make the Archive Service user a domain administrator, you must add permissions to read the Exchange configuration subtree:

1. If necessary, install ADSI Edit by following the instructions on Windows Server TechCenter (<http://technet.microsoft.com/en-us/library/cc773354.aspx>).
2. Run *adsiedit.msc* to open **ADSI Edit**.
3. Under **Configuration**, expand **Services**, right-click **Microsoft Exchange**, and then click **Properties**.
4. In the Microsoft Exchange Properties dialog box, select the **Security** tab.
5. Click **Add**, type the name of the Archive Service user, and click **OK**.
6. Click **Advanced**, select the Archive Service user, and click **Edit**.
7. In the **Apply to** box, select *This object and all child objects* and select the **Allow** check box for:
 - ◆ **List Contents**
 - ◆ **Read All Properties**
 - ◆ **Read Permissions**

8. Click **OK** on all the Microsoft Exchange Properties dialog boxes.
9. Under **Domain**, right-click **Microsoft Exchange System Objects** and click **Properties**.
10. In the Microsoft Exchange System Objects Properties dialog box, select the **Security** tab.
11. Click **Add**, type the name of the Archive Service user, and click **OK**.
12. Click **Advanced**, select the Archive Service user, and click **Edit**.
13. In the **Apply to** box, select *This object and all child objects* and select the **Allow** check box for:
 - ◆ **List Contents**
 - ◆ **Read All Properties**
 - ◆ **Read Permissions**
14. Click **OK** on all the Microsoft Exchange System Object Properties dialog boxes.
15. Close **ADSI Edit**.

Granting permissions on all mailbox databases

It is necessary to grant 'administer information store' permissions manually if the Archive Service user is *not* a domain administrator.

For Exchange Server 2003, it is also necessary to grant 'view information store' permissions.

In Exchange Server 2010 and Exchange Server 2007

In Exchange Server 2010 and Exchange Server 2007, you use a Powershell command to change the user permissions.

The following command gives the user *UserName* rights on all storage groups within any Exchange 2007 server on the domain *DomainName.com*:

```
foreach ($sg in Get-StorageGroup) { if ((Get-ExchangeServer
    $sg.Server).Domain.Equals("DomainName.com")) { get-mailboxdatabase
    -storagegroup $sg.Identity | add-adpermission -user UserName
    -ExtendedRights MS-Exch-Store-Admin; } }
```

The command must be run on an Exchange server in each domain.

The following command gives the user *UserName* rights within any Exchange 2010 mailbox database:

```
get-mailboxdatabase | add-adpermission -user UserName -ExtendedRights
MS-Exch-Store-Admin
```

In Exchange Server 2003

By default, the System Manager in Exchange Server 2003 does not display the **Security** tab when you select an Exchange Organization object, so you cannot modify the permissions. Therefore, to change user permissions, you must enable the *ShowSecurityPage* registry setting:

1. Go to the following Exchange branch in the registry editor:
HKEY_CURRENT_USER\Software\Microsoft\Exchange\Exadmin
2. Create a new dword called *ShowSecurityPage*.
3. Change the value of the dword to 1.

This displays the **Security** tab when you select an object.

4. Close and re-open the Exchange System Manager.

You can now change the permissions on the servers to grant full access to the user.

1. For each Exchange server you will archive, navigate to the server object that has the Administrative group containing the user.
2. Right-click the server object, and click **Properties**.
3. In the Properties window, click the **Security** tab.
4. Click **Add**, specify the user or group for which you want to change permissions, and then click **OK**.
5. Ensure that the user or group is selected in the **Group of user names** list, and then under **Permissions for...**, select **Allow Administer Information Store** and **Allow View Information Store Status**.
6. Click **OK**.

Installation overview

To install Exchange Server Archiver, you must have *domain administrator* privileges.

1. Install the Admin Console (page 12).

The Admin Console provides the interface for you to configure and manage Exchange Server Archiver.

2. Install the services and components.

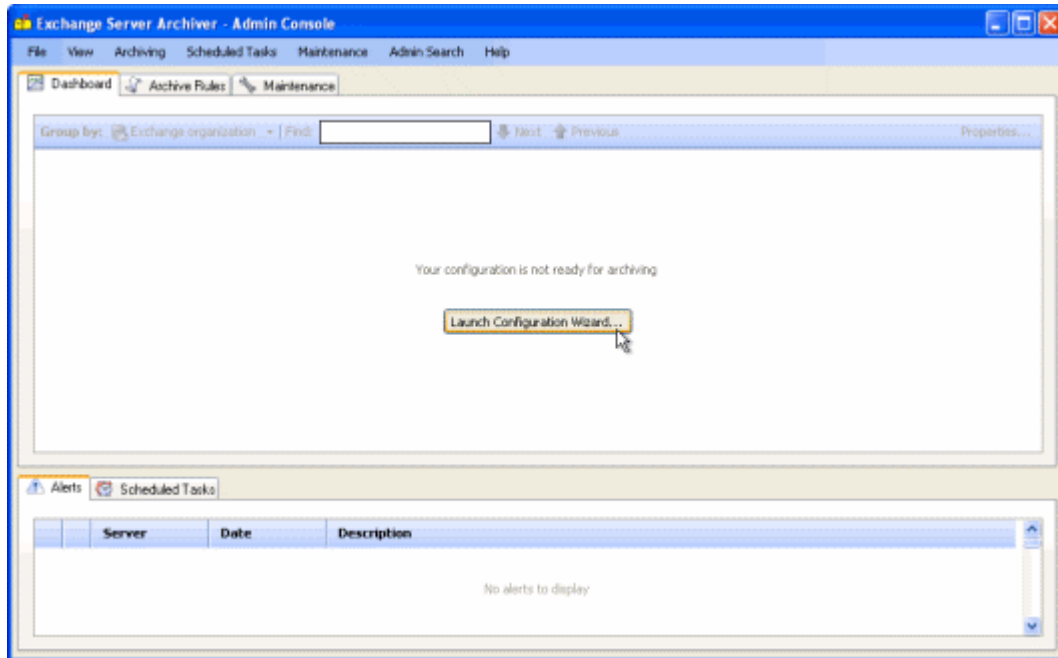
To do this, open the Admin Console and click the **Launch Configuration Wizard** button. The Configuration wizard takes you through installation of the services and components. Installing the services and components provides some supporting information to help you with the installation.

If you are upgrading from a previous version, see Upgrading Exchange Server Archiver (<http://www.red-gate.com/ESA/3.0?i=9459>).

Installing the Admin Console

You install the Admin Console by running the installer that you downloaded from the Red Gate Web site. This installs the Admin Console, and places the installers for the services and components in your installation folder.

When you have installed the Admin Console, on the Start menu, select **Red Gate** and then **Exchange Server Archiver Admin Console**.



To install the services and components and configure your system ready for archiving, click **Launch Configuration Wizard**.

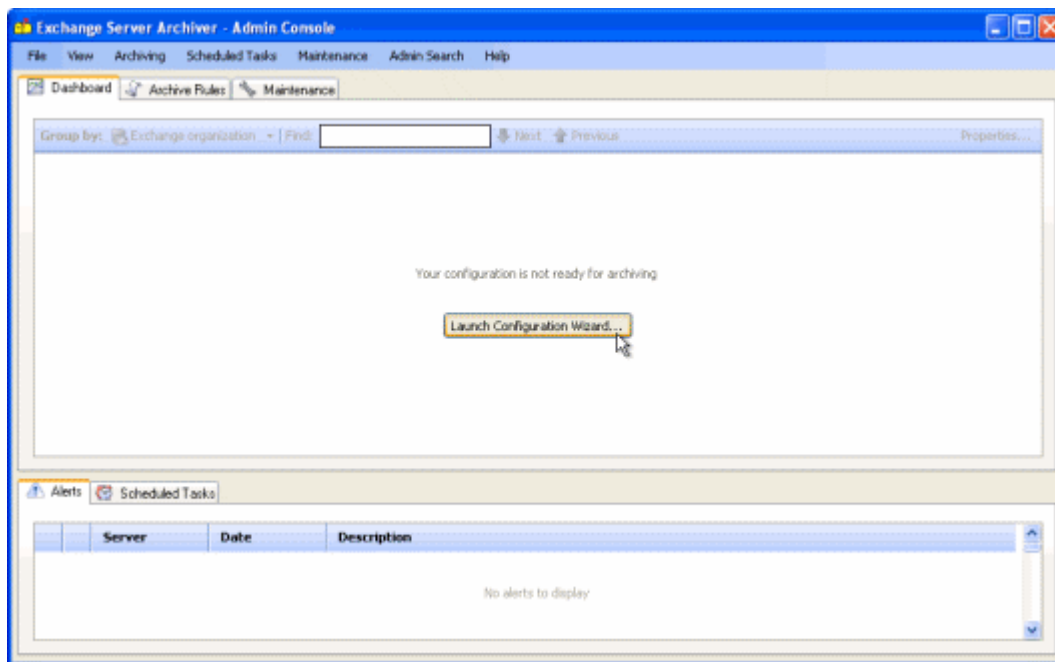
Installing the services and components

When you have installed the Admin Console, you can install the services and components. To install the services and components, you must be a *domain administrator*. Install all of the services and components in the same domain.

If you encounter problems during installation and configuration, for information about how to solve some common issues see [Troubleshooting your installation](#).

You are recommended to use the Configuration wizard to guide you through the installation and configuration of the services and components.

To start the Configuration wizard, click **Launch Configuration Wizard** in the Admin Console (or on the **Maintenance** menu, click **Configuration Wizard**).



The wizard comprises the following steps:

1. Setting up the Archive Service user (page 14)
- 2a. Installing the Archive Service (page 14)
- 2b. Installing the Storage Service (page 15)
- 2c. Adding Archive Stores (page 16)
- 2d. Installing the UAA Service (page 16)
- 2e. Installing the OWA Add-in (page 17)
- 2f. Installing the Outlook Add-in (page 18)
3. Selecting the archive mode (page 19)
4. Setting up a 'quick rule' (page 19)

You can change the configuration of the services and components at a later date using the **Maintenance** tab in the Admin Console.

For each service, you can choose to install locally or on a remote server.

Installing locally

If you install locally, the Setup wizard for the service is launched by the Configuration wizard; when you have completed the service Setup wizard, you are returned to the Configuration wizard.

Installing on a remote server

If you install on a remote server, the installation executable for the service must be copied to the server because it must be run on the server. The Configuration wizard prompts you to:

1. Copy the installer to the remote server.

The Configuration wizard takes you to the folder that contains the installers. By default, this is:

C:\Program Files\Red Gate\ESA Admin Console\Installers

2. Connect to the remote server; you must then run the service installer on the server.

When you run the installer, the Setup wizard for the service is displayed. Complete the steps and click **Finish**, and then return to the Configuration wizard on your local computer.

3. In the Configuration wizard, specify the server and port details so that the Admin Console can register the service.

Installing manually

You are recommended to use the Configuration wizard to install the services and components. However, if you prefer you can run the individual installers for the services and components manually. By default, they are located in:

C:\Program Files\Red Gate\ESA Admin Console\Installers

1. Setting up the Archive Service user

The Archive Service coordinates the scheduling and archiving of messages.

You must create the Archive Service user in Active Directory®. For full details about the permissions required and how you can add them, see [Creating the Archive Service user](#) (page 7).

2a. Installing the Archive Service

Before you install the Archive Service, ensure that MAPI is installed on the computer that will host the Archive Service. For details, see [MAPI versions supported for Exchange Server Archiver](http://www.red-gate.com/ESA/3.0?i=9464) (<http://www.red-gate.com/ESA/3.0?i=9464>).

Exchange Server Archiver requires a minimum of one Archive Service to communicate with Exchange, but you can install more Archive Services if required. For example, you may want to use a different Archive Service for each Exchange server to improve performance or because you have different versions of Exchange in your configuration. Only one Archive Service can be active for a particular Exchange server at a time.

The wizard guides you through the installation of only one Archive Service; if you want to add more, you can do this later by using the **Install Service** button on the **Maintenance** tab of the Admin Console.

Only Exchange servers that are on the local domain will be registered with the Archive Service. If you want to archive mailboxes that are on other domains or Exchange servers, you can register them later by using the **Manage Exchange Organization and Domains** button on the **Maintenance** tab of the Admin Console.

In **Step 2a: Archive Service location** in the Configuration wizard, you can choose to install the Archive Service locally or on a remote server (see *Installing on a remote server*, above).

In the Archive Service Setup wizard:

- Under **Windows service account**, enter the details of the Archive Service user you specified in Step 1.
- Under **Remoting access**, you are recommended to select **Accessible via TCP**, and specify the port to be used.

If you are installing all services (Archive Service, Storage Service, and UAA Service) locally, you can select **Accessible from this computer only (IPC)** if you prefer.

2b. Installing the Storage Service

A Storage Service hosts one or more Archive Stores.

You can have any number of Storage Services in your Exchange Server Archiver configuration. However, the wizard guides you through the installation of only one Storage Service; if you want to add more, you can do this later using the **Maintenance** tab of the Admin Console.

You are recommended to install the Storage Service on the same server as the Archive Stores that it hosts. However, there may be some exceptions; for example, if you create an Archive Store on a NAS (network attached storage) unit, the Storage Service is installed on a different computer; for more information, see *Archiving to external storage* (<http://www.red-gate.com/ESA/3.0?i=9439>).

Before you install the Storage Service, ensure that the Indexing Service is installed on the server. The Indexing Service creates and stores a catalog of the messages on the disk.

In **Step 2b: Storage Service location** in the Configuration wizard, you can choose to install the Storage Service locally or on a remote server (see *Installing on a remote server*, above).

In the Storage Service Setup wizard:

- When you are prompted for the **Catalog folder**, enter a location on a local disk for the catalog of messages that will be created by the Indexing Service.
The catalog size can grow to 25% of the total store size; therefore ensure the location you specify will have sufficient disk space.
- Under **Service Account**, you are recommended to select **Local system**.
If you select **Specific user**, enter the details of a domain account that has permissions to read and write files to the local disk, and to administer the Indexing Service on the local computer.

2c. Adding Archive Stores

When you have installed a Storage Service, you can add one or more Archive Stores. An Archive Store is a folder in which messages are archived; for more information, see About Archive stores (<http://www.red-gate.com/ESA/3.0?i=9470>).

In **Step 2c: Archive Store locations**, the Configuration wizard suggests a name and path for the Archive Store. The path is local to the server on which you installed the Storage Service. You can change the name and location if required, but each Archive Store must have a unique folder name. You can move the Archive Store later, if required; see Moving an Archive Store (<http://www.red-gate.com/ESA/3.0?i=9475>).

If you want to add more Archive Stores, click  **Add** and enter details for the new store. You can add up to 15 stores using the Configuration wizard; if you need to add more, you can do this later by clicking **Add Archive Stores** on the **Maintenance** menu of the Admin Console.

2d. Installing the UAA Service

The UAA Service enables your users to access and search archived messages.

Before you install the UAA Service, ensure that the following is installed on the computer that will host the service:

- IIS 5.1 or later
If you are using IIS 7, you must set up IIS 6 Metabase Compatibility; see Configuring IIS.
If you are using IIS 6 or IIS 7, the UAA Service installer will disable the Windows loopback check and restart IIS (if the loopback check has not already been disabled). For information about why the installer does this, see Microsoft support page article 896861 (<http://support.microsoft.com/kb/896861>).
Note: in a production environment, do not install the UAA Service on IIS 5.1 (or IIS 6.0 in IIS 5.0 isolation mode); only install the UAA Service on these versions in an evaluation environment in which all services are installed on the same server.
- ASP.NET 2.0
For IIS 7 and IIS 6, the UAA Service installer creates an application pool that is configured for ASP.NET 2.0. For IIS 5.1, you must ensure the ASP.NET version is set to 2.0; see Configuring IIS.

- MAPI

You must ensure that you install a version of MAPI that is compatible with your Exchange configuration. For details, see MAPI versions supported for Exchange Server Archiver (<http://www.red-gate.com/ESA/3.0?i=9464>).

- the installer requires that a Web site must be configured to use port 80 before you install the UAA Service; however, you do not have to use this Web site for the UAA Service

The server on which you install the UAA Service must be visible to users accessing their messages remotely (for example, if they are using Outlook Anywhere). However, note that an external URL is not required for Outlook Web Access.

The location of the UAA Service is added to archived messages. Therefore, **you are recommended to create a CNAME (alias) DNS record for the UAA Service's server and enter this in the Web site address**; otherwise, a change to the URL will mean that all archived messages will need to be reprocessed.

All Exchange servers on the local domain that are detected by Exchange Server Archiver will automatically use the UAA Service you install using this Configuration wizard. If you need to install a second UAA Service, for example because of your network topology, you can do this later using the **Install Service** button on the **Maintenance** tab of the Admin Console. You can then change the UAA Service used by an Exchange server by selecting the server in the **Maintenance** tab of the Admin Console, and clicking **Properties**.

In **Step 2d: User Archive Access Service** in the Configuration wizard, choose to install the UAA Service locally or on a remote server (see *Installing on a remote server*, above).

In the UAA Service Setup wizard, you will be prompted to specify:

- the installation folder
- the Web site on which you want to install the UAA Service

You can choose to use an existing Web site that is configured to use port 80, or to create a new Web site.

To install on an existing Web site that is not configured to use port 80, run the installer from the command line and specify the parameter WEBSITE_PORT. For example:

```
msiexec /i "ESA User Archive Access Service x86.msi" WEBSITE_PORT=8080
```

Note that if you are creating a new Web site and you are using IIS 5.1, you cannot use SSL as the communication protocol.

- the virtual directory of the UAA Service

Note that if you specify an existing virtual directory, it will be overwritten.

2e. Installing the OWA Add-in

If you want your users to access their archived messages from Microsoft Outlook Web Access using a transparent interface, you can install the Exchange Server Archiver OWA Add-in.

Before you install the OWA Add-in, ensure that the following is installed on the server:

- for Exchange Server 2007, Service Pack 1 and Update Rollup 3 or later (<http://support.microsoft.com/kb/937052>)
- for Exchange Server 2003, Service Pack 2 or later

Exchange Server 2010 Outlook Web Access is not supported.

If you are using Exchange Server 2003 and you install the UAA Service on a different computer from the Exchange server, to use the OWA Add-in you must allow delegation of credentials to the UAA Service. For full details, see Authorization for the OWA Add-in on Exchange Server 2003 (<http://www.red-gate.com/ESA/3.0?i=9453>).

To install the add-in, in **Step 2e: Outlook Web Access Add-in** in the Configuration wizard, copy the installer to the Exchange server that hosts Outlook Web Access, and then connect to the Exchange server and run the installer on the server. By default, the installer is located in:

C:\Program Files\Red Gate\ESA Admin Console\Installers

If you want to install the OWA Add-in later, you can do this from the Admin Console **Maintenance** tab: right-click the Exchange server and click **Properties**, and then click **Go to Installer**.

2f. Installing the Outlook Add-in

The Outlook Add-in provides a transparent interface for your users to access archived messages using Microsoft Outlook 2007 or Outlook 2003.

(If you do not install the add-in, users can access the archived messages by using a hyperlink to the UAA Service.)

Before you install the Outlook Add-in, ensure that the following is installed on the computer:

- Outlook 2007 or Outlook 2003
- Outlook .NET Programmability Support

To install the add-in, in **Step 2f: Outlook Add-in location** of the Configuration wizard, select the **Install Outlook Add-in on this computer** check box and then specify the path.

You can save the installer so that you can deploy it to other computers as part of a batch process (see Deploying the Exchange Server Archiver Outlook Add-in using Active Directory group policy (<http://www.red-gate.com/ESA/3.0?i=9463>)). The same installer is used for both Outlook 2007 and Outlook 2003. If you want to do this, select the **Save the installer** check box, and then specify the location to which you want to save it.

When you click **Next**, the Outlook Add-in Setup wizard is started. You will be prompted to specify the installation folder for the add-in.

When you have installed the Outlook Add-in, you must restart Outlook.

3. Selecting the archive mode

Exchange Server Archiver offers four different archive modes. An archive mode specifies what happens to messages that are processed during an archive.

You select the archive mode in **Step 3: Archive mode** in the Configuration wizard.

For example, you may wish to use **Copy entire message** or **Copy attachment only** mode if you are running a trial version of Exchange Server Archiver.

Copy attachments only

- copies attachments to the specified Archive Store
- the original attachments remain on the Exchange server

Copy entire message

- copies the message bodies to the Archive Store
- copies attachments to the Archive Store
- originals of both remain on the Exchange server

Copy and remove attachments only

- copies attachments to the Archive Store
- removes the attachments from the Exchange server

Full archive

- copies messages and attachments to the Archive Store
- on the Exchange server, removes each message that has been archived and replaces it with a placeholder; the placeholder contains the first few lines of the message, and links to the full archived message and any attachments
- removes the attachments from the Exchange server

4. Setting up a 'quick rule'

If you want to set up an archive task immediately, in **Step 4: Quick Rule** in the Configuration wizard you can define a rule to specify which mailboxes will be archived and when they will be archived. (If you do not want to set up a rule now, select **Skip this step**; no archive task will be set up and the configuration is completed.)

To set up a rule, select a rule template and click **Next**. In the wizard pages that follow, you are prompted to specify:

- the conditions under which you want messages to be archived
- a unique name for the rule
- the mailboxes to be considered for archiving
- the Archive Store in which you want the archived messages to be stored
- the schedule for the archive task

You can set up more rules and apply them to groups of users, or individual users when you have completed the Configuration wizard by using the **Rules** tab on the Admin Console.

When you have set up the quick rule (or skipped this step), you have completed the Configuration wizard and you can click **Finish** to close the wizard. You can then use the Admin Console to add more rules or to amend your configuration, as required.

Configuring IIS

By default, IIS (Internet Information Services) runs on the lowest available version of ASP.NET. However, the UAA Service Web application has a minimum requirement of ASP.NET 2.0. For IIS 7 and IIS 6, the UAA Service installer creates an application pool that is configured for ASP.NET 2.0. For IIS 5.1, you must set the ASP.NET version to 2.0 (page 22).

In addition, for IIS 7, you must set up IIS 6 Metabase Compatibility and Windows Authentication before you use the UAA Service.

Note that if you are using IIS 6 or IIS 7, the UAA Service installer will disable the Windows loopback check and restart IIS (if the loopback check has not already been disabled). For information about why the installer does this, see Microsoft support page article 896861 (<http://support.microsoft.com/kb/896861>).

For IIS 6.0 only, the UAA Service installer will automatically set ASP.NET v2.0 to Allowed in Web Service Extensions.

IIS 7 on Vista: IIS 6 Metabase Compatibility

To set up IIS 6 Metabase Compatibility and Windows Authentication for IIS 7 on Vista:

1. In the Control Panel, open **Programs and Features**, and then click **Turn Windows features on or off**.
2. If necessary, enter administrator credentials in the User Access Control dialog box.
3. In the Windows Features dialog box, expand **Internet Information Services, Web Management Tools**, and then **IIS 6 Management Compatibility**.
4. Ensure that the **IIS Metabase and IIS 6 configuration compatibility** check box is selected.
5. Return to the top level of the features list, and expand **Internet Information Services, World Wide Web Services**, and then **Security**.
6. Ensure that the **Windows Authentication** check box is selected.
7. Click **OK**.

IIS 7 on Windows Server 2008: IIS 6 Metabase Compatibility

To set up IIS 6 Metabase Compatibility and Windows Authentication for IIS 7 on Windows Server 2008:

1. In the Control Panel, open **Administrative Tools**, and then **Server Manager**.
2. Expand **Roles**, and select **Web Server IIS**.
3. In the Web Server (IIS) pane, under **Roles Services** pane, check that **Windows Authentication** and **IIS 6 Metabase Compatibility** are installed:
 - ◆ **Windows Authentication** is located under **Web Server, Security**

- ◆ **IIS 6 Metabase Compatibility** is located under **Management Tools, IIS 6 Management Compatibility**

ASP.NET version on IIS 5.1

The option to set the ASP.NET version may not be available if you installed IIS before .NET 2.0. To make the option available, at the command line, navigate to:

C:\Windows\Microsoft.NET\Framework\v2.0.50727 (for x86)

C:\Windows\Microsoft.NET\Framework64\v2.0.50727 (for x64)

and then run:

```
aspnet_regiis /iru
```

To set the ASP.NET version to 2.0:

1. In the Control Panel, select **Administrative Tools**, and then **Internet Information Services (IIS) Manager**.
2. Navigate to the Web site on which you installed the UAA Service, and then right-click **UAAService** and click **Properties**.
3. Select the **ASP.NET** tab and ensure that the **ASP.NET version** is set to **v2.0**.
4. Click **OK**.

Uninstalling Exchange Server Archiver

To uninstall Exchange Server Archiver:

1. Copy back messages and attachments from the Archive Stores to the Exchange server:

The Admin Console provides **Copy Back to Exchange** on the **Maintenance** menu to enable you to schedule the copy-back task; see Copying back archived messages (<http://www.red-gate.com/ESA/3.0?i=9350>).

Note that any single-instance storage will be lost; therefore you may require more space on your Exchange server than was used before you started archiving.

2. Uninstall each service and component, using the standard Add/Remove Programs feature.